

CH 450 - MP

Self-Erecting Hydraulic Piling Rig



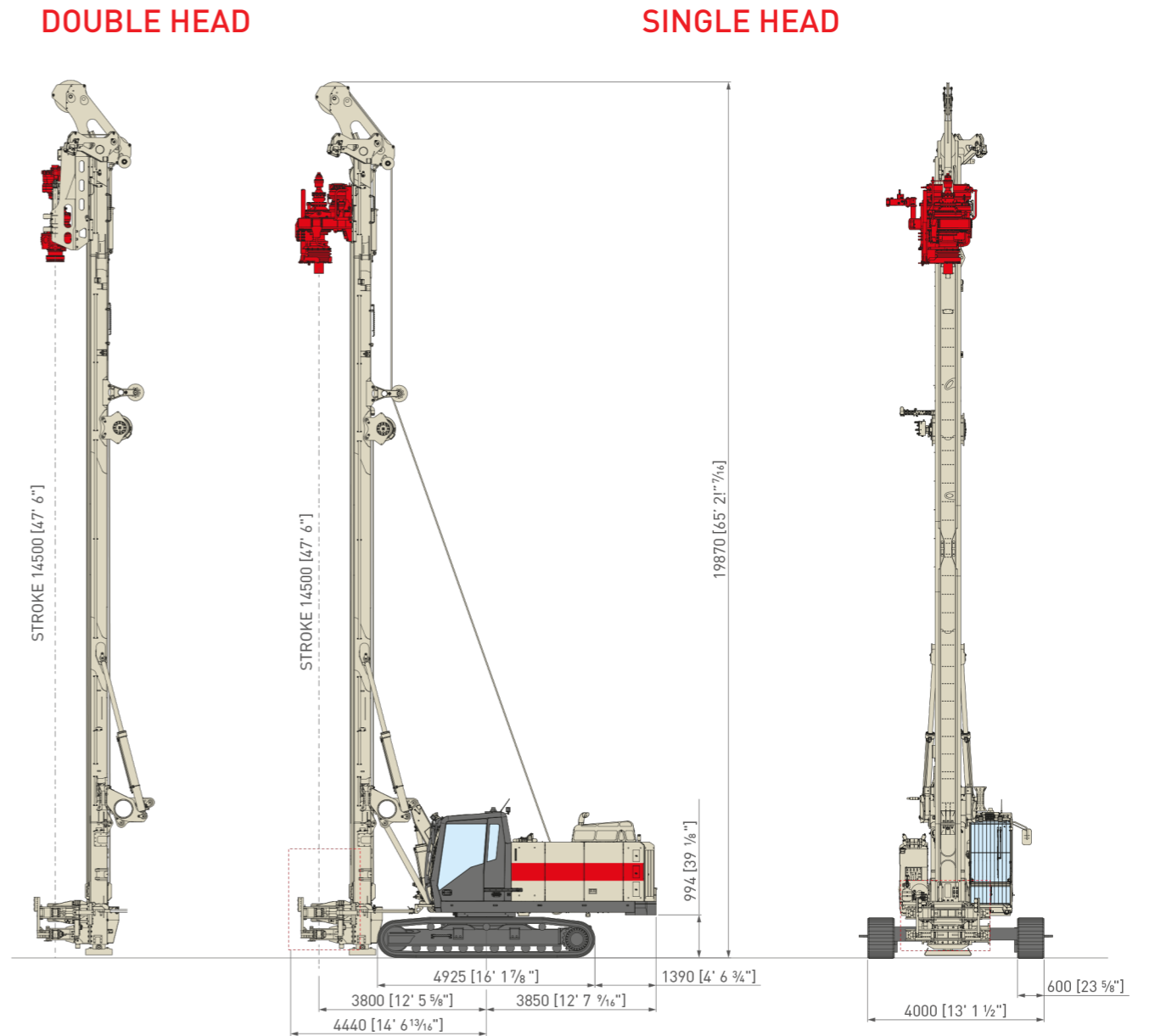
High Tech Line



COMACCHIO

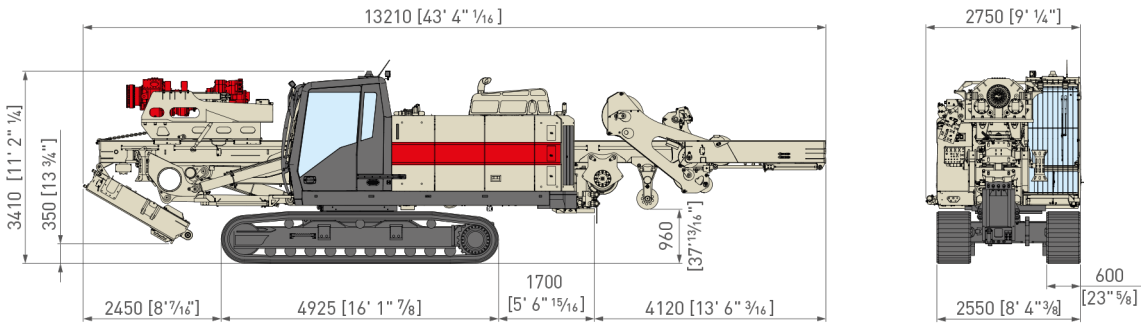
DRILLING HI-TECH

Undercarriage		m.s.	i.s.		
Type	-	Variable gauge, telescoping side frames			
Removable tracks	-	No			
Track shoe width	mm in	600	23" 5/8	800	31" 1/2
Track shoe type	-	Triple grouser			
Overall width (retracted side frames)	mm ft-in	2.550	8' 4" 1/2	2.950	9' 8" 1/4
Overall width (extended side frames)	mm ft-in	4.000	13' 1" 1/2	4.200	13' 9" 1/4
Overall length	mm ft-in	4.925		16' 2"	
Centre idler to centre sprocket	mm ft-in	4.100		13' 5" 1/2	
Upperframe					
Width	mm ft-in	2.550		8' 4" 1/2	
Operators' cabin	-	TOPS & FOPS-1 certified, 980 mm [3' 3"] wide			
Control system type	-	CAN-BUS			
User interface	-	12" Touch Screen			
Tail swing radius	mm ft-in	3.865		12' 8"	
Diesel Engine					
<i>High Tech Line</i>					
Make and model	-	Cummins QSB6.7			
Emission certification	-	EU stage V / US EPA Tier 4f		EU stage IIIA / US EPA Tier 3	
Aspiration	-	Turbocharged and charge air cooled			
Power rating (2000 rpm)	kW HP	209	280	201	274
Displacement	cc in ³	6.700		408	
Fuel consumption rate (100% power, rated speed)	g/kWh lb/hp-hr	202	0.332	222	0.365
Average fuel consumption approx.	l/hr gal/hr	31,5	8.3	34,5	9.1
Fuel tank	l gal	500		135	
Sound pressure level in cabin (EN 16228-1, Annex B)	-	LP _A 82 dB (A)			
Sound Power level (2000/14/EC - EN 16228-1, Annex B)	-	LW _A 108 dB (A)			
Hydraulic System					
Main pumps flow	l/min. gal/min.	2 x 214		2 x 56.5	
Third pump flow	l/min. gal/min.	160		42.3	
Hydraulic oil tank capacity	l/min. gal/min.	600		158	
Main Winch					
Type	-	Controlled descent			
1 st layer line pull	kN lbs	160		35,970	
1 st layer rope speed	m/min. ft/min.	75		246	
Rope diameter	mm in	24		1 5/16"	
Rope layers	-	2			
FEM classification	-	M6-L3-T5			
Service Winch					
Type	-	Controlled descent		Free fall	
1 st layer line pull	kN lbs	72		16,200	
1 st layer rope speed	m/min. ft/min.	55	180' 5"	49	161
Rope diameter	mm in	18		1 1/16"	
Rope layers	-	3		4	
FEM classification	-	M5-L2-T5		M6-L3-T5	

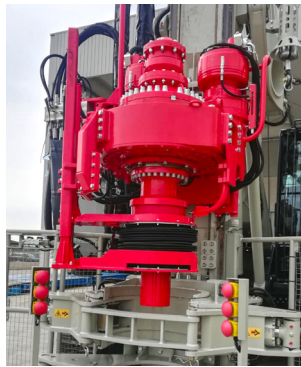


MP (Micropiles)	m.s.	i.s.	SINGLE HEAD		DOUBLE HEAD	
Max. feed force	kN	lbs	240	53,900	93	20,900
Max. retract force	kN	lbs	240	53,900	204	45,800
Mast						
Feed Stroke	mm	ft-in	14.500	47' 6"	14.500	47' 6"
Double clamp with casing extractor						
Clamping range	mm	in	120 - 620	4 3/4" - 24"	120 - 620	4 3/4" - 24"
Rotary head						
			Upper head		Lower head	
Model	-		CR 19		R 2400S	
Gears	-		2		3	
Max. torque	kNm	lbs-ft	57	42,000	24.7	18,200
Max. speed	rpm		51.5		97	
Weight w/o tool						
	kg	lbs	43.300	95,500	43.700	96,400

Overall Dimensions



Options and Accessories



www.comacchio.com



Comacchio s.r.l.

Via Callalta, 24/B - 31039 Riese Pio X (TV) (Italy)

Tel +39 0423 7585 - Fax +39 0423 755592 - sales@comacchio.com