

# VDH-MP70



**MULTIPURPOSE FOUNDATION MACHINE**



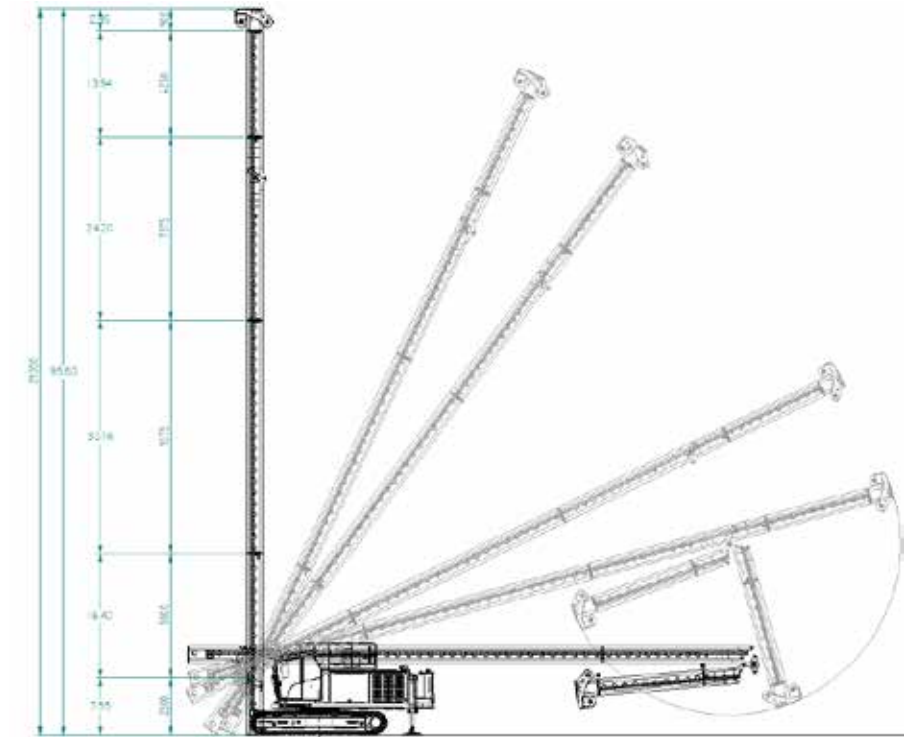
# Futureproof

Van den Heuvel designs, modifies and builds various types of high-quality machines for special applications. We are a successful partner in the foundation sector. Production and modification take place entirely in-house, using advanced equipment, with expertise developed over more than 70 years. From the initial request to delivery of the machine, service and maintenance; we take care of the whole process. Custom solutions result in perfect basic machines, which can be adapted to the needs of the customer or project. Custom solutions result in perfect basic machines, which can be adapted to the needs of the customer or the project.



# VDH-MP

Each project is unique and has its own foundation requirements. Therefore, we developed our own line of modular multipurpose machines. These machines can be used for a wide range of foundation work, such as drilling, compacting, vibrating and pile driving. It started with the VDH-MP60, developed on the basis of a specific customer request, followed by the VDH-MP40, MP70 and MP70 TC.



From transportation to operational mode

# Rack and pinion system

The VDH-MP70 is the third machine in the range and a further development of the previous two variants. The MP70 is flexible in terms of its leader length and attachments, making it suitable for many types of work. This is because the MP70 is equipped with a special rack and pinion system.

The big advantage of this is that winches are no longer needed and the leader can be easily shortened. This makes it the ideal solution for projects in the city centre, work in buildings or for use under high-voltage pylons. The variant with a long leader (29 metres) has the inclination cylinders at the back. Gripping the leader at a higher point results in a more stable leader. The shortest version (25 metres) is basically the same, but shorter, making it easier to work under high-voltage pylons or inside buildings.





## Technical innovations

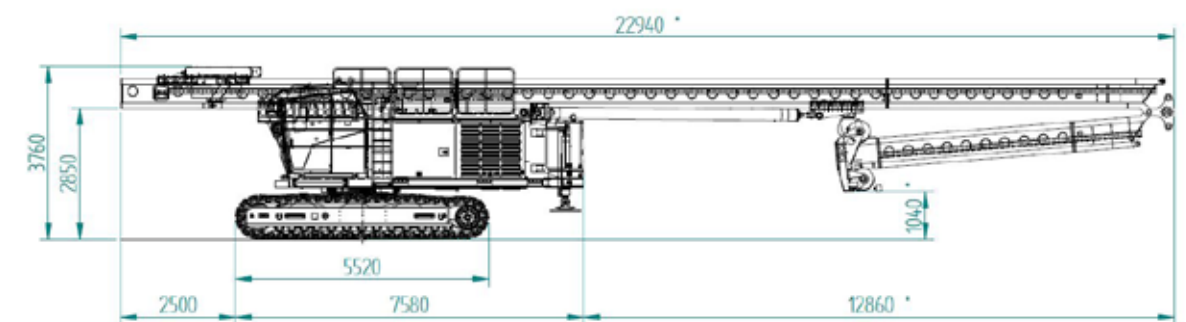
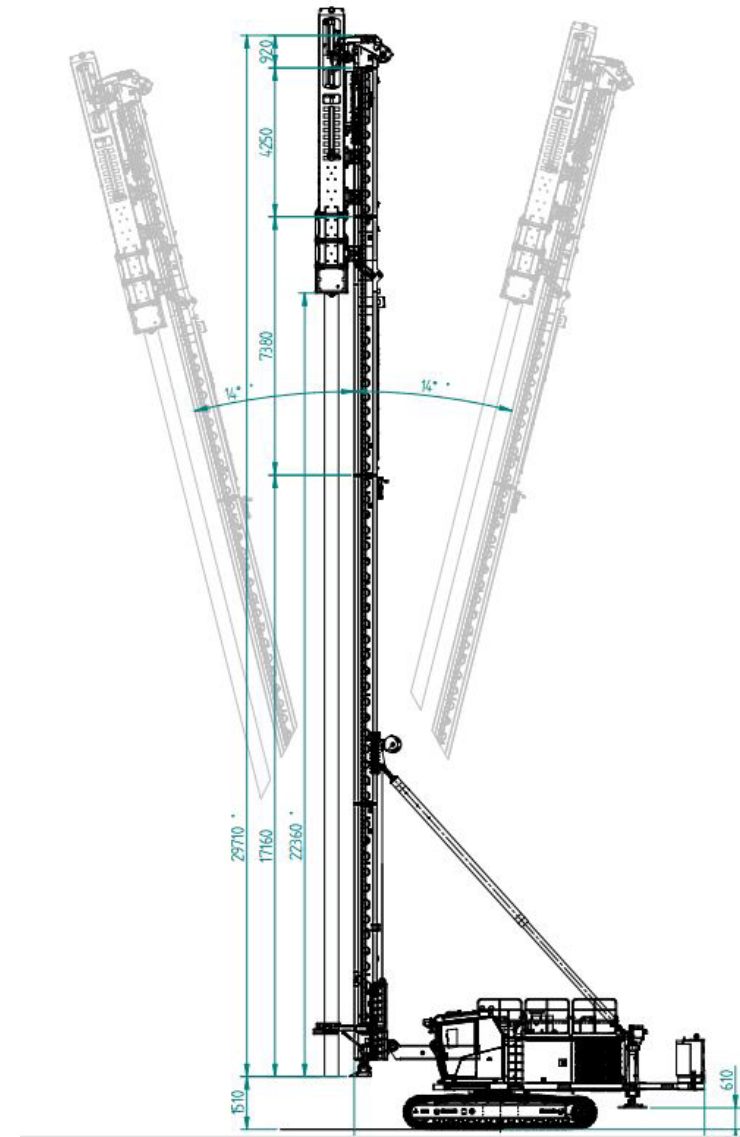
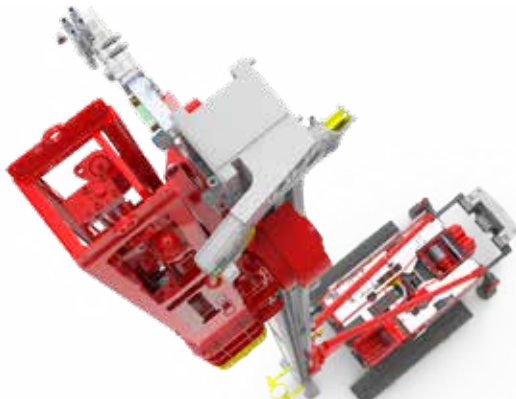
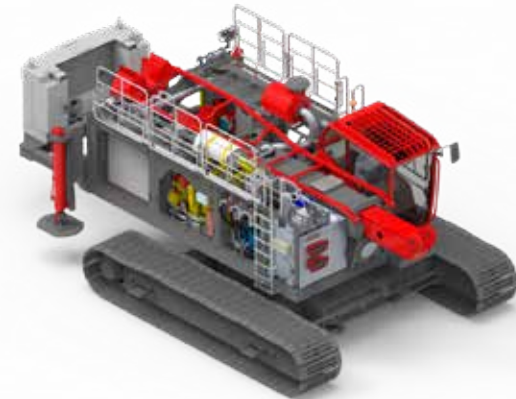
The high efficiency of the machine is achieved by the reliability and quality of the brands, materials and components used. The MP70 has a heavy duty engine and large pumps, which means plenty of power and lots of oil to drive the attachments. The MP70 is optimally built for greater efficiency and effectiveness.

The operator's cabin is noise- and vibration damped and equipped with fan, heater and airconditioning. The MP70 has two hydraulically extendible outriggers mounted at the rear of the machine, alongside the ballast weight. The undercarriage of the machine can be hydraulically widened to a maximum outer dimension of 4,900 mm.

Technical specification	
Standard leader length	25 m
Maximum leader length	29 m
Horizontal slide stroke	1,200 mm
Leader stroke	3,000 mm
Operating weight without tool	89 tonnes
Transport weight without counter weight	79 tonnes
Diesel engine	CAT C18 (Stage V)
Power diesel engine	563 kW (765 hp)
Fuel tank	1,500 l
Total counter weight	10,000 kg
Transport width	3,400 mm
Working width	4,900 mm
Undercarriage length	5,520 mm
Standard track shoe width	900 mm

Hydraulic	
Maximum hydraulic flow	pm / 5 pumps: 2x200, 1x125, 2x412
Maximum oil pressure	350 bar
Maximum drilling torque	350 kNm
Hydraulic tank	750 l
Hydraulic components	Rexroth

Winches	
Main winch 1	100 tonnes pull-up
Main winch 2	40 tonnes pull down
Auxiliary winch	8 tonnes
Service winch	3 tonnes
Manlift winch	0.8 tonnes
Maximum auger diameter	600 mm
Maximum auger length	26 m
Maximum pile length	25 m





## Development of the VDH-MP series has been done with focus on:

### Quality

Calculation of frame, leader and undercarriage for strength and fatigue with defined extremes. A-class components. Oversized components such as slewing drive and travel motors. Delaminated plate with certificate as base plate above slewing ring. No errors in critical components.



### Functional simplicity

Electrical system. Machine is normally wired with multi-cable and junction boxes. Measuring is possible for service purposes. Measuring is possible. Components are not VDH specific. Proven solutions s.a. Rexroth pull-up/pull-down control. PLC for safety items and only when intelligence is required. Good and clear displays for operation.



### Well being driver

Spacious cabin with big windows. Attention has been paid to visibility towards leader, attachment, surrounding and noise insulating. Good seating position and excellent seat. Ergonomic screens and switches.



### Appearance machine

Good appearance is subjective, but the machine must show that we have paid attention to details both for the driver and mechanics and for the work the machine has to perform. The machine must have a good quality appearance, both company and operator should be proud of this machine.



## Advantages of the multipurpose machines:

- Multipurpose
- Modularly constructed
- High efficiency
- Latest technologies
- Safe, efficient operation
- CE certified and compliant with standard NEN-EN 16228
- Configurable to customer requirements

All VDH machines are extensively and carefully tested and approved prior to delivery, are of the highest quality and meet the applicable standards. Van den Heuvel also provides maintenance and service for all the machines.



## Production in our workshops

In our fully equipped metal and hydraulic workshops and paint shop, we employ skilled welders, mechanics and paint sprayers who ensure that you get a top-notch end product. The welding, hydraulics and assembly of the piling rigs and appliances are all completed here. The piling rigs and appliances are then treated in our paint shop to preserve them.



## Modular machine

The modular machine serves as a solid base that allows complete flexibility in how it is prepared and automated, to perfectly match the customer's wishes. This allows variation within the standard components in terms of motor power, pump, leader and ballast. The machine is therefore optimally suited to specific types of work within the sector. The machine can also be painted in the desired colours.



Hulsenboschstraat 2, NL-4251 LR Werkendam  
+31 (0)183-502655 | [info@vdheuvelwerkendam.nl](mailto:info@vdheuvelwerkendam.nl)  
[www.vdheuvelwerkendam.nl](http://www.vdheuvelwerkendam.nl)